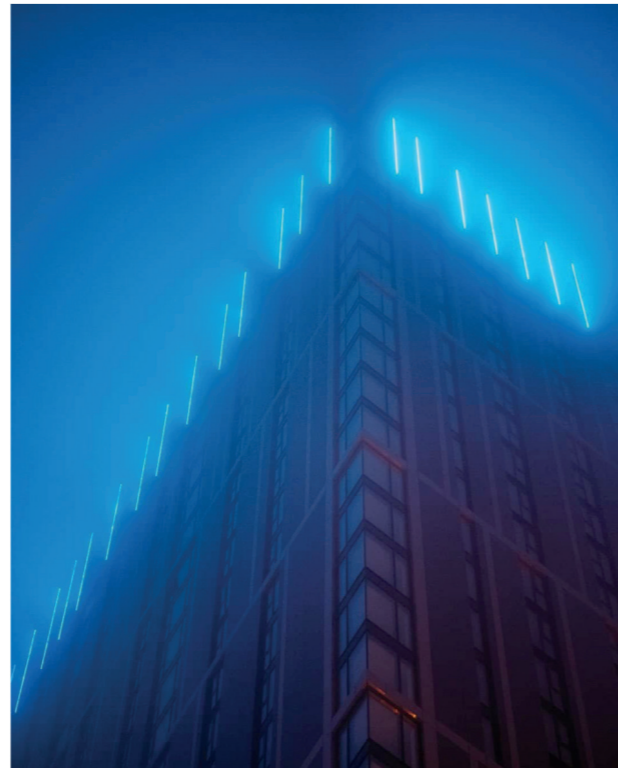
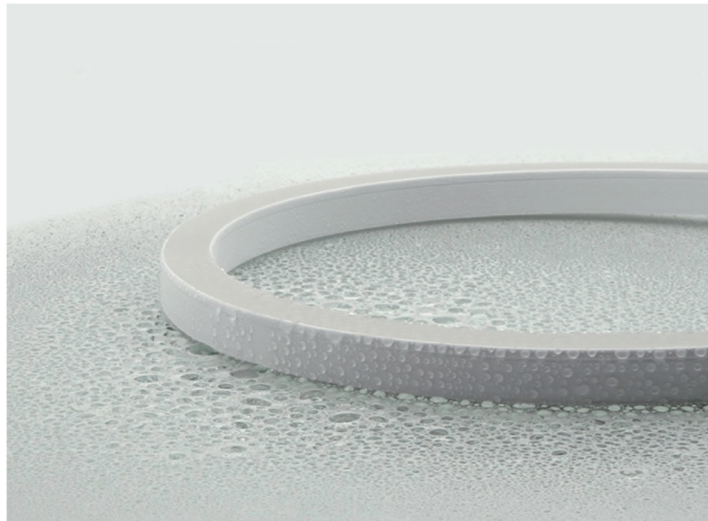


Neon Wave



PRODUCT DESCRIPTION

Designed with a smooth square profile and superior even illumination the NEON WAVE strip is fully encapsulated in a silicone chamber by utilizing consummate extrusion technology, assembled with injection-moulded connectors to achieve IP68 protection. With its 5 year warranty, the NEON WAVE offers exceptional performance against solvents, UV, flame and salt water and is IK10 rated against impact. Easy for installation and applicable for various circumstances.

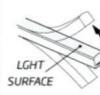
The NEON WAVE is a popular item for architectural market with rated power 12W/m and 108 LED's/m. Its CRI value can reach 95Ra and maximum luminous flux is up to 480lm/m.



Horizontal bend



Vertical bend



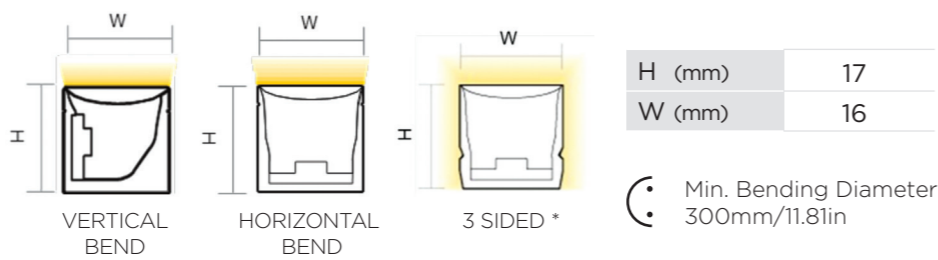
3 Sided
*Vertical Bend Only



FEATURES

- Ingress Protection
- IP68**
- Colour Temperature
- 4000k**
- White Reflector
- W**

DIMENSIONS



PRODUCT DATA

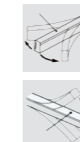
NEON WAVE					
Product code	Power (W/m)	Voltage (V)	Ll/m	White Colour Temp (k)	
MONOCHROME					
150.565.VB.830	12	24	565	3000k	Vertical Bend
150.580.VB.840	12	24	580	4000k	Vertical Bend
150.580.VB.857	12	24	580	5700k	Vertical Bend
COLOUR					
150.565.VB.RGB	12	24	350	-	Vertical Bend
150.565.VB.RGBW	15	24	350	27K/3K/4K	Vertical Bend
150.350.HB.RGB	12	24	350	-	Horizontal Bend
150.350.HB.RGBW	15	24	350	27K/3K/4K	Horizontal Bend
151.1050.3VB.830	12	24	950	3000K	3 Sided *
151.1100.3VB.840	12	24	950	4000K	3 Sided *
151.1100.3VB.857	12	24	950	5700K	3 Sided *
151.350.3VB.RGB	12	24	570	-	3 Sided *
151.350.3VB.RGBW	15	24	570	27K/3K/4K	3 Sided *

* 3 Sided is vertical bend only

PRODUCT OPTIONS

MONOCHROME

- Correlated colour temp suffix .822K
- 2200k**
- Correlated colour temp suffix .827K
- 2700k**
- Correlated colour temp suffix .830K
- 3000k**
- Correlated colour temp suffix .835K
- 3500k**
- Correlated colour temp suffix .857K
- 5700k**



Horizontal bending



Vertical bending



Emergency Dali
suffix .EMD3

CCT WHITE

RGB

RGBW

LED PERFORMANCE

25° Ambient Temperature	L80/B10
NEON WAVE	100,000

'L' Value = % of initial Lumens maintained after specified time
'B' Value = % of fittings falling to meet operational expectations after specified time

PHOTOMETRIC PERFORMANCE

