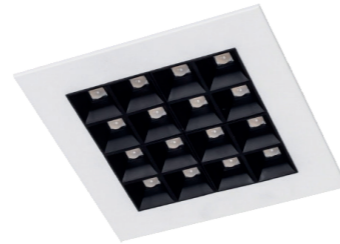


# Galactic SQ



Black reflector



## PRODUCT DESCRIPTION

The Galactic SQ is a recessed mounted LED downlight. Engineered to the same exacting standards as the rest of the Galactic range, this LED downlight is equally appealing and also highly efficient. Constructed with a steel body ensures excellent thermal control of the latest LED technology, which produces an impressive output of up to 161 LI/cW and 3800 delivered lumens overall.

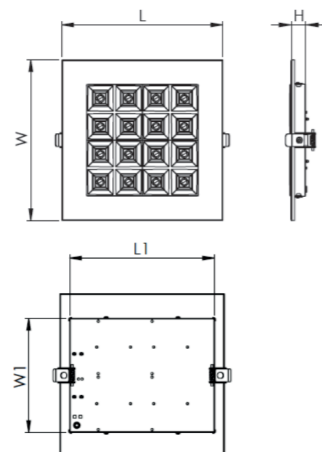
Maximum light transmission is achieved through the highly efficient double parabolic reflector with lenses, offering excellent low glare properties.

Available in two sizes and a range of outputs to suit a wide variety of applications, the GALACTIC SQ is ideal for reception, general circulation and commercial areas.

## FEATURES

- Ingress Protection
- Colour Temperature
- White Reflector

## DIMENSIONS



	mm	mm
H	37	37
L	130	230
W	130	230
L1xW1 - cut out	110 x 90	210 x 180
KG	0.3	0.9

## PRODUCT DATA

GALACTIC SQ					
Product code	Curcuit Watts (w)	Delivered Lumens	Colour Temp	Efficacy LI/cW	Dimension (mm sq)
315.130.850.840	6	850	4000	142	130
315.130.1150.840	8	1150	4000	144	130
315.230.2300.840	16	2300	4000	144	230
315.230.2900.840	18	2900	4000	161	230
315.230.3800.840	26	3800	4000	146	230
315.130.850.830	6	850	3000	142	130
315.130.1150.830	8	1150	3000	144	130
315.230.2300.830	16	2300	3000	144	230
315.230.2900.830	18	2900	3000	161	230
315.230.3800.830	26	3800	3000	146	230

## PRODUCT OPTIONS

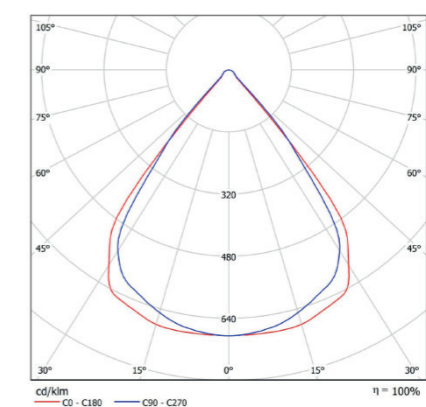
- Correlated colour temp suffix .830
- 3hr Emergency suffix .EM3
- Black Reflector suffix .B
- Dali suffix .D1
- Emergency Dali suffix .EMD3

## LED PERFORMANCE

25° Ambient Temperature	L80/B10
GALACTIC SQ	60,000

'L' Value = % of initial Lumens maintained after specified time  
'B' Value = % of fittings failing to meet operational expectations after specified time

## PHOTOMETRIC PERFORMANCE



- Galactic Square
- Output - 3777
- Watts - 25.6
- LOR - 100%